

## Why use a Toy Library?

Parents no longer have to worry about their children growing out of the toys.

Develop New Skills

Children are given the opportunity to develop new skills by using a wide variety of quality toys.

Try Before You Buy

A chance to try new toys before buying.

Meet Friends

A friendly meeting place for parents and children to make new friends.

Bring the Fun Home

Toy hire for parties etc.



**A toy library is just like a book library, but instead of borrowing books you can borrow toys to play with at home!**

## How to find us

Matlock Toy Library is located at:  
**Activity Room** at the **Matlock Surestart Children's Centre** based at Castle View Primary School, School Road, Matlock, Derbyshire DE4 3DS.



Opening Times

Fridays 10.00am to 12noon

Term time only

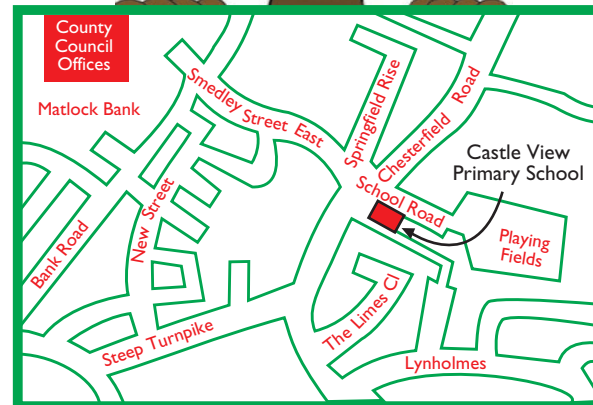
For more details, please contact:

Mobile 07909 061413

or visit:

[www.matlocktoylibrary.co.uk](http://www.matlocktoylibrary.co.uk)

[matlocktoylibrary@hotmail.co.uk](mailto:matlocktoylibrary@hotmail.co.uk)



# Matlock Toy Library

**Come, Play & Take Away!**



## What happens at Matlock Toy Library?

A wide range of good quality toys are available to borrow.

### Stay and Play

Come and play with a wide variety of toys before you choose something to take home.

### Messy Table

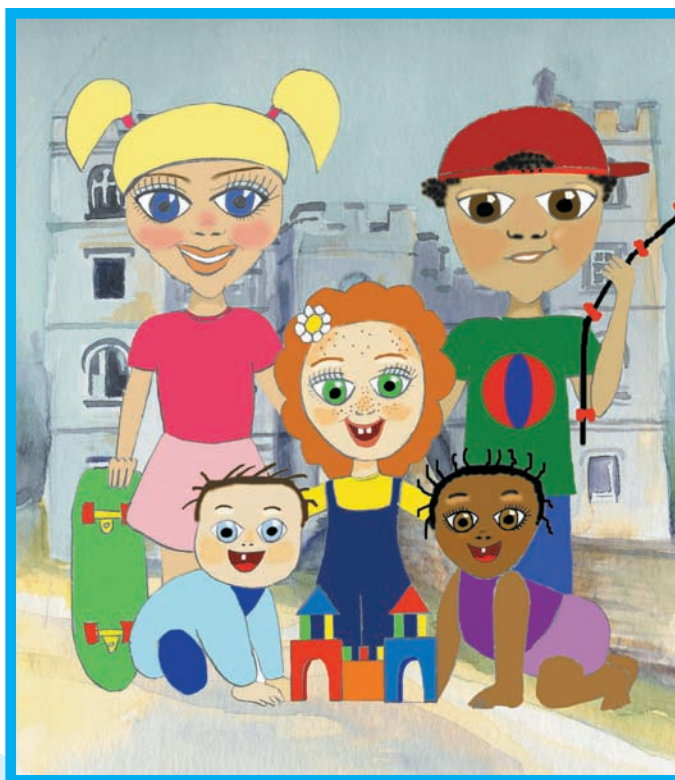
Activities like play dough, painting, gluing or sticking are always available.

### Fun Time

Stories, rhymes, music, games.

### Refreshments

Children can enjoy a healthy snack and parents can have a coffee and a chat.



## Who can borrow toys?

In Matlock and the surrounding area:  
Families with a child aged 0-11 years  
Parent and toddler groups  
Childminders



## What toys are available from Matlock Toy Library?

### Baby

A large selection of stimulating toys and equipment.

### Construction

Duplo, Meccano and many more.

### Imaginative

Dressing-up clothes, doll houses, farms, train sets, puppets and play food.

### Mind Stimulation

Musical Instruments, Circus equipment  
Board games and puzzles.

### Larger Toys

Equipment and outdoor games such as prams, pop-up tents and a parachute!



## How much does it cost?

### Stay and Play Session

Costs £1.50 per family which includes refreshments, activities and the hire of one toy for a week.

### Additional Toy Hire

Costs between 50p and £1 per week.

### Annual Family Membership

Costs only £3.00

